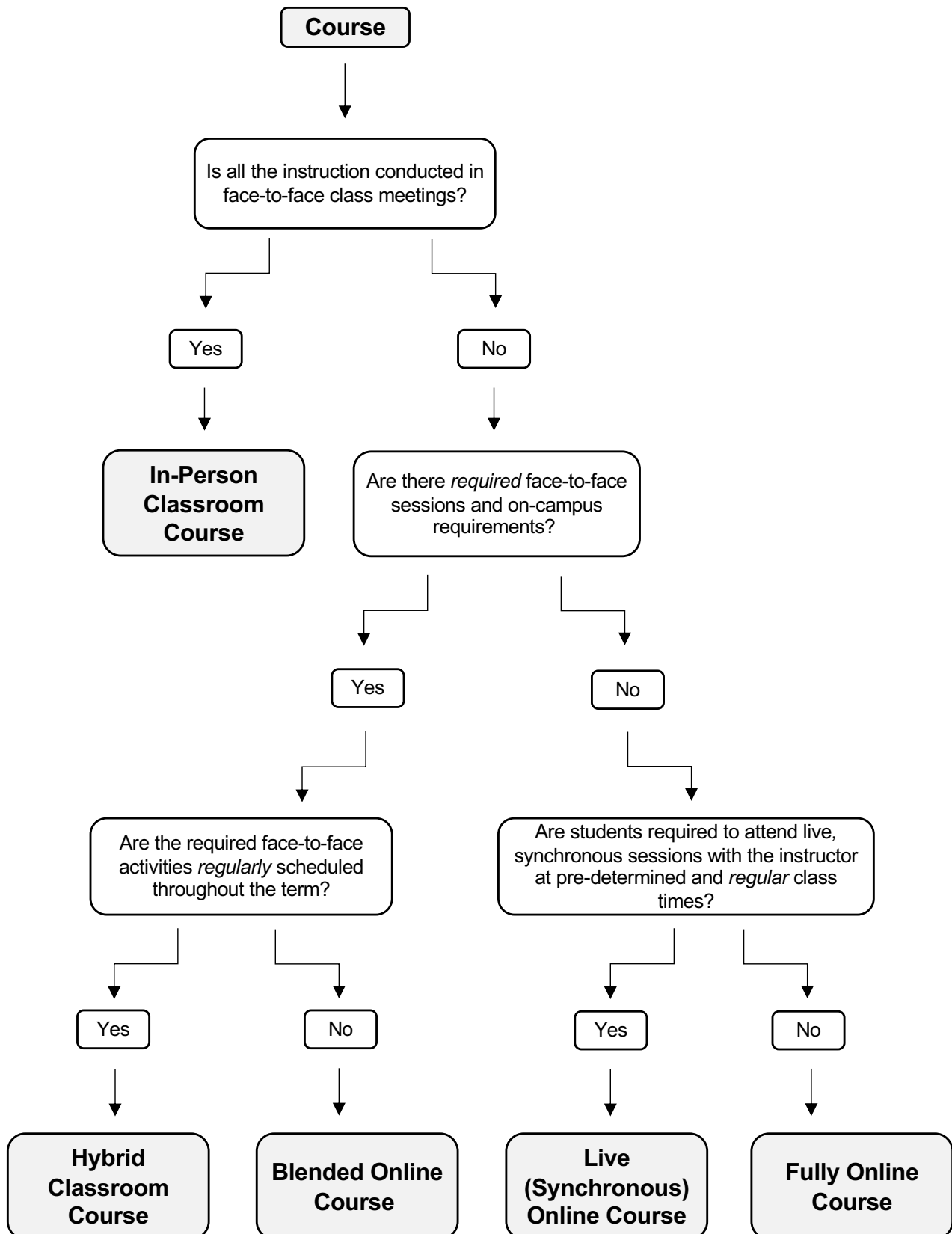


Collin College Instructional Delivery Formats

Decision Tree. Effective Fall 2021.





Course Delivery

Instructional Delivery Options at Collin College

Collin offers a variety of course delivery options for students, varying from in-person classroom courses to fully online courses.

Stay informed about your course requirements by reviewing the course/section notes upon registration, reading the course syllabus, checking your Canvas announcements, contacting your professor, and monitoring other forms of communication from the college.

Course Options with On-Campus Requirements

Lecture/Lab In-person Classroom Course

Regularly scheduled face-to-face meetings at a specific campus location; some use of technology to support learning. Consult with your professor about testing requirements.

Hybrid Classroom Course*

Regularly scheduled face-to-face meetings at a specific campus location mixed with online instruction. Campus meeting times will be specified at the time of registration.

Blended Online Course*

Majority of the instruction is online, with some required activities scheduled at a campus location. Instructor posts meeting times in the course syllabus and in Canvas. Review course/section notes upon registration and consult with your professor for more information.

Course Options with No On-Campus Requirements

Live (Synchronous) Online Course*

Course is fully online with no geographic limitations or classes at a physical location; instruction is conducted live online with students and the instructor meeting virtually at regularly scheduled times.

Fully Online Course*

Course is fully online with no geographic limitations or classes at a physical location. Interaction with the instructor occurs mostly asynchronously with the possibility of synchronous activity in some courses.

**Testing requirements including proctoring with student authentication, a desktop or laptop computer (not a mobile device), webcam, and microphone may be required in this type of course.*

