

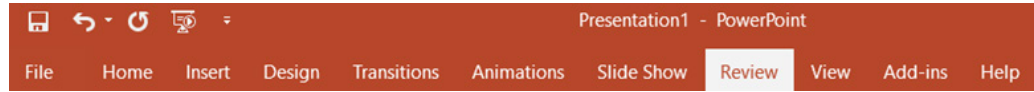
Accessibility Checker

UPDATED: JUNE 2021

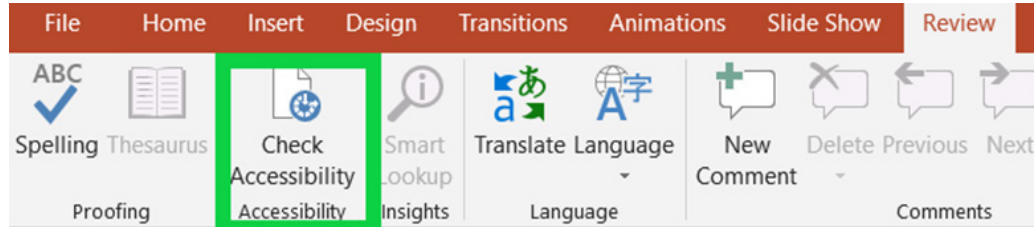


Steps:

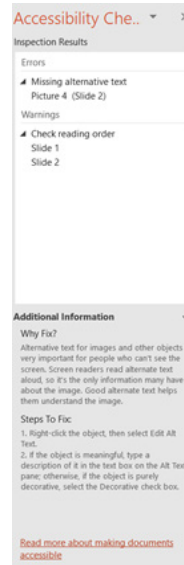
1. Click “Review” in the main toolbar.



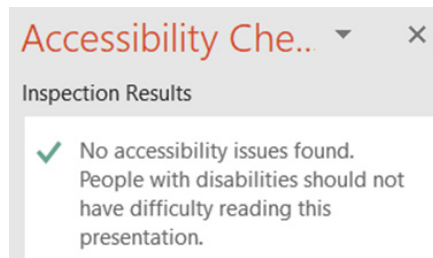
2. Click “Check Accessibility” in the Ribbon (the newly displayed menu).



3. A sidebar will open to the right of the presentation slides.
 - a. If there are any issues, it will list them by type and then by slide. For each type of issue, the checker will provide additional information, including the reason to fix the errors or warnings and the steps to fix them.



- b. If there are no issues, the Accessibility Checker will confirm.



For assistance, contact the eLC at 972.881.5870 or eLC@collin.edu

eLC faculty resources are available in CougarWeb

<http://inside.collin.edu/elc>